

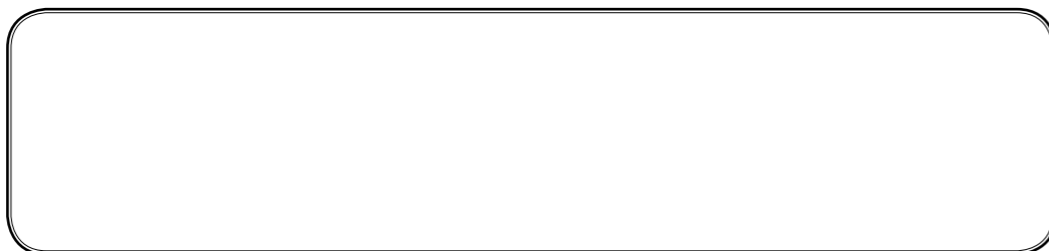


A Real Classic



A Real Classic

RA Engineering Co.,Ltd
www.royalalloy.com
sales@royal-alloy.com



Grandprix

GP125/180 GP125S/200S



GP125/180

Air Cooled

GP125S/200S

Liquid Cooled





CLASSIC
STYLE



MODERN
TECHNOLOGY



Metal body, front and rear LED lamps, digital speedometer, dual-seat, Bosch ABS disc brake system, USB charging port.

Grandprix



A REAL CLASSIC
★ Genuine
Classic
* RA Engineering Co.,Ltd. *
GP200S ABS
Liquid Cooled



TWIN CAM 200 4 VALVE



A REAL CLASSIC
★ Genuine
Classic

* RA Engineering Co.,Ltd. *

GP125S

Liquid Cooled



A REAL CLASSIC
★ Genuine
Classic
* RA Engineering Co.,Ltd. *
GP180 ABS
Air Cooled



Halogen Headlamp



A REAL CLASSIC
★ Genuine
Classic

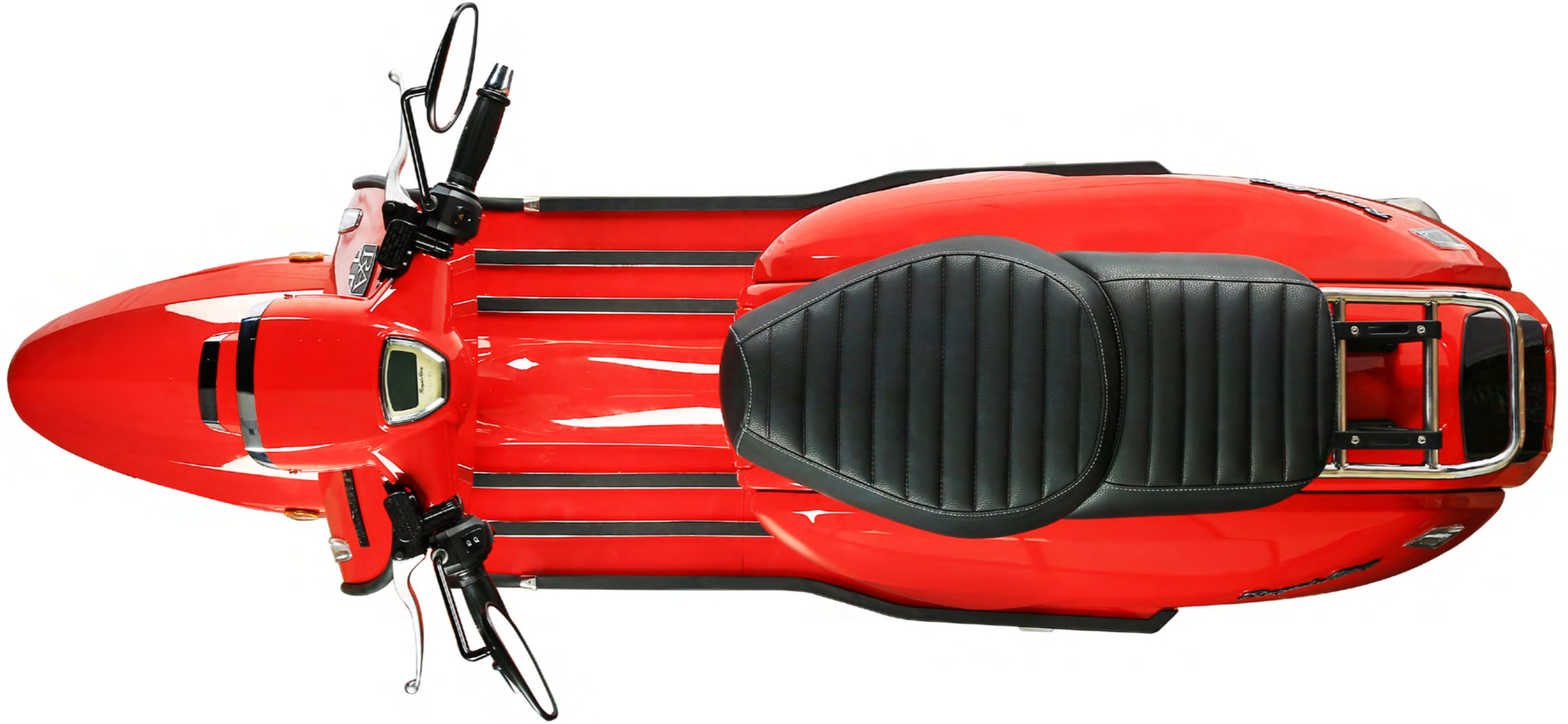
* RA Engineering Co.,Ltd. *

GP125

Air Cooled



A REAL CLASSIC
★ Genuine
Classic
* RA Engineering Co.,Ltd. *







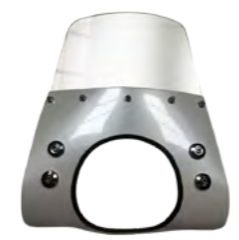
ACCESSORIES



Stainless Homologated Full System



Black Ceramic Homologated Full System



Round Headlamp Custom Screen



Rectangular Headlamp Custom Screen (instead of the Quadrate)



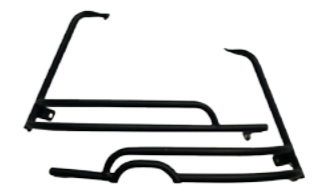
Back Rest Black/Chrome



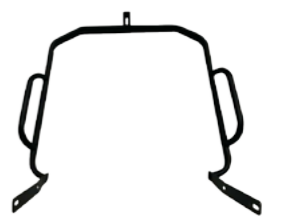
Custom Rear Mudflap (instead of Rear fender Custom)



Front Rack Black/Chrome



Rear Panel Protectors Balck/Chrome



Front Panel Protector Black/Chrome



Grandprix

Colour Options



Technical Specification

ENGINE	GP125	GP180	GP125S	GP200S
Engine Type	Single , Air Cooled 4T 2V SOHC	Single , Air Cooled 4T 2V SOHC	Single , Liquid Cooled, 4T 4V DOHC	Single , Liquid Cooled, 4T 4V DOHC
Displacement(cc)	124.6	169	124.2	181
Compression Ratio	10.5:1	10.5:1	12.0:1	11.6:1
Max Net Power (kW/r/min)	7.2 / 7500	8.8 / 8000	10.5/ 9750	14.5 / 9500
Max Net Torque, Rate (Nm/r/min)	9.2 / 7000	12.5/ 5500	10.5 / 8000	16.0 / 7000
Ignition	Electronic Inductive	Electronic Inductive	Electronic Inductive	Electronic Inductive
Starting Method	Electric	Electric	Electric	Electric
FRAME BODY				
Dimensions(mm)	1870(L) ×620(W) ×1150(H)	1870(L) ×620(W) ×1150(H)	1870(L) ×620(W) ×1150(H)	1870(L) ×620(W) ×1150(H)
Wheelbase(mm)	1370	1370	1370	1370
Dry Weight(Kg)	120Kg	120Kg	120Kg	128Kg
Max Load(Kg)	2 persons	2 persons	2 persons	2 persons
Ground Clearance(mm)	330	330	160	160
Seat Height(mm)	770	770	770	770
Front Suspension:	Double Hydraulic Pre-load Shock Absorber	Double Hydraulic Pre-load Shock Absorber	Double Hydraulic Pre-load Shock Absorber	Double Hydraulic Pre-load Shock Absorber
Rear Suspension:	Double Shock Absorber	Double Shock Absorber	Double Shock Absorber	Double Shock Absorber
Front Tyre:	Tubeless 110/70-12	Tubeless 110/70-12	Tubeless 110/70-12	Tubeless 110/70-12
Rear Tyre:	Tubeless 120/70-12	Tubeless 120/70-12	Tubeless 120/70-12	Tubeless 120/70-12
Brake:	(F) 220mm Disc (R) Disc 220mm CBS	(F) 220mm Disc (R) Disc 220mm Bosch ABS	(F) 220mm Disc (R) Disc 220mm CBS	(F) 220mm Disc (R) Disc 220mm Bosch ABS
Battery(Volts):	12 volts	12 volts	12 volts	12 volts
Fuel Tank Capacity(L):	11	11	11	11
Emissions Compliance:	Euro 4	Euro 4	Euro 4	Euro 4



Flame Red



Midnight Grey



Ocean Blue



Matt Bronze



Sherwood Green Matt/Shiny



Pearl White



Ivory White



Matt Black



Pewter Grey



Metal Blue



Jet Black



Matt Silver



Thunder Grey